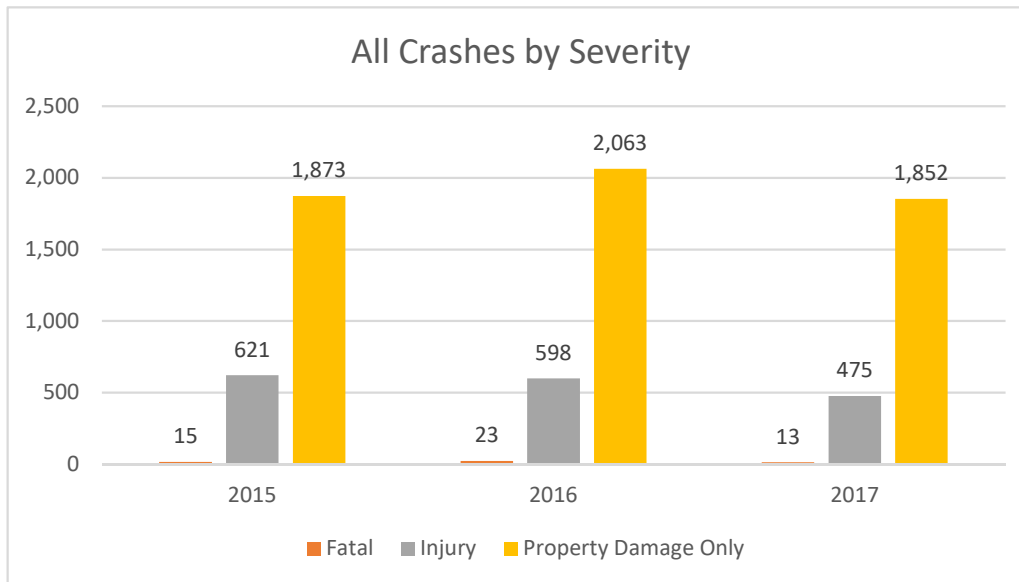


All Vehicle Crashes by Severity				
Severity	2015	2016	2017	Total
Fatal	15	23	13	51
Incapacitative Injury	1	4	1	6
Non-Incapacitating Injury	3	5	4	12
Other Injury	617	589	470	1676
Property Damage Only	1873	2063	1852	5788
Total	2509	2684	2340	7533



N

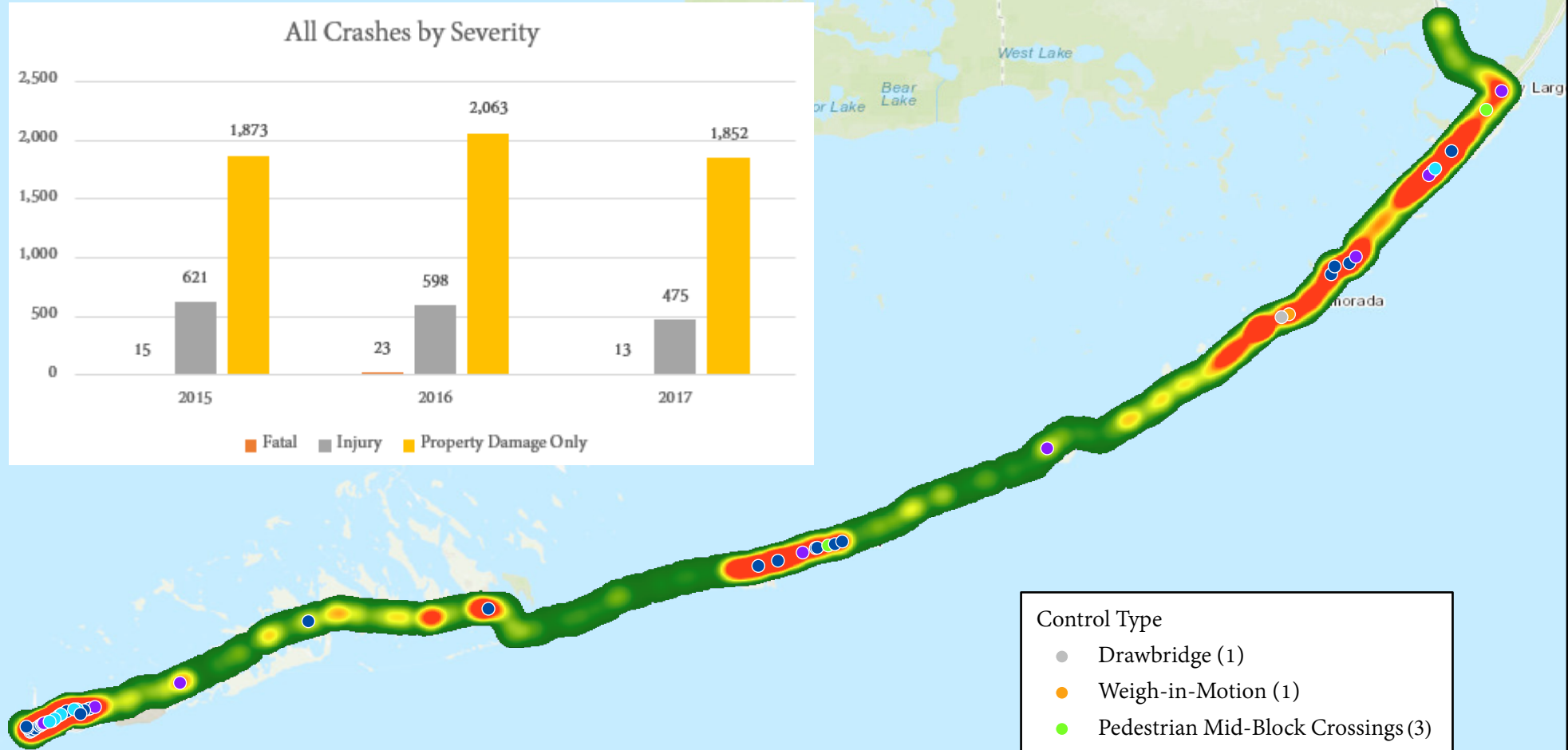
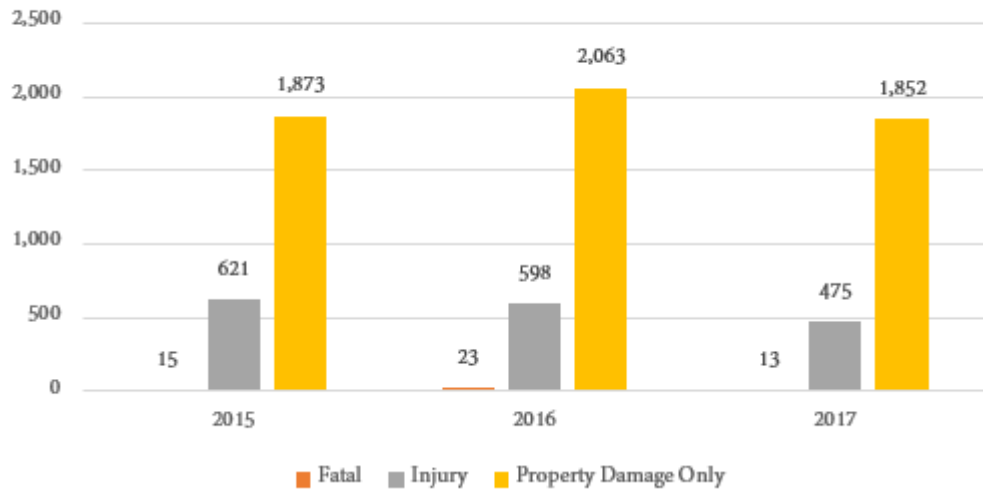


All Crashes by Severity on US-1

Weighting Factor for Hot Spots

Fatality = 10; Injury = 5; PDO = 1

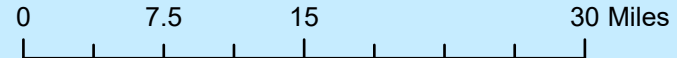
All Crashes by Severity



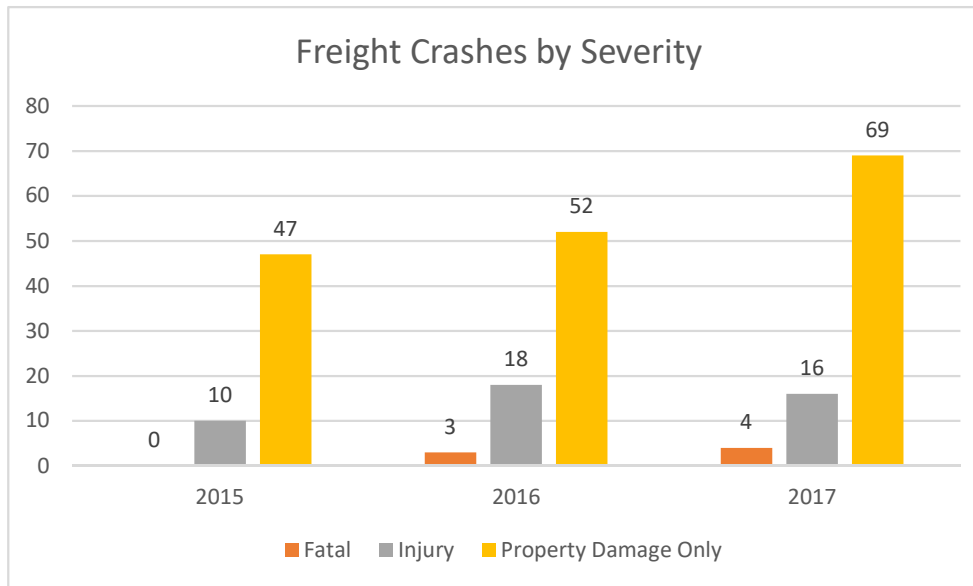
- Control Type
- Drawbridge (1)
 - Weigh-in-Motion (1)
 - Pedestrian Mid-Block Crossings (3)
 - Pedestrian Hybrid Beacons (6)
 - Emergency Signals (8)
 - Traffic Signals (31)



Relatively Low Relatively Medium Relatively High



Freight Crashes by Severity				
Severity	2015	2016	2017	Total
Fatal	0	3	4	7
Incapacitative Injury	2	8	1	11
Non-Incapacitating Injury	5	8	8	21
Other Injury	3	2	7	12
Property Damage Only	47	52	69	168
Total	57	73	89	219

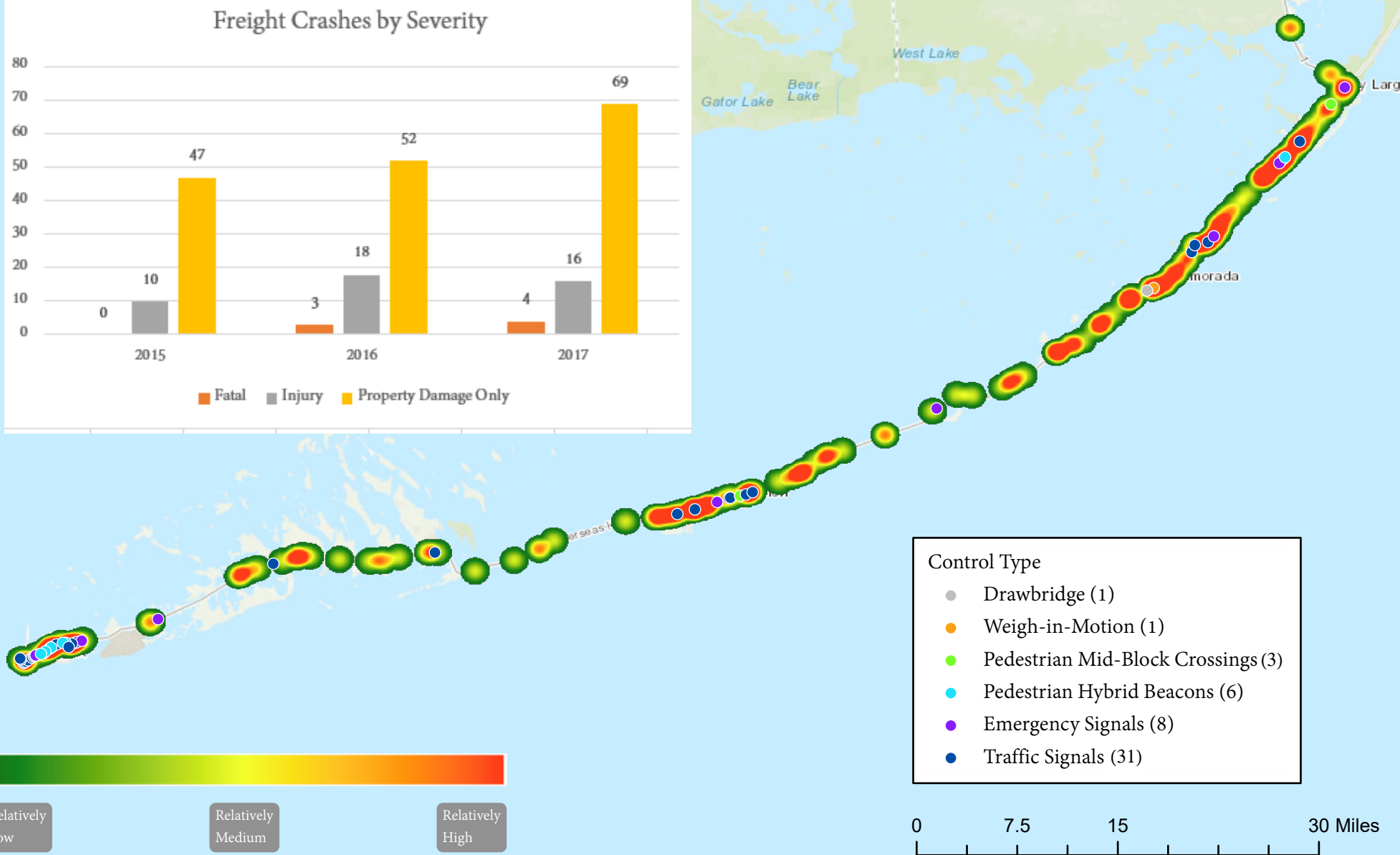
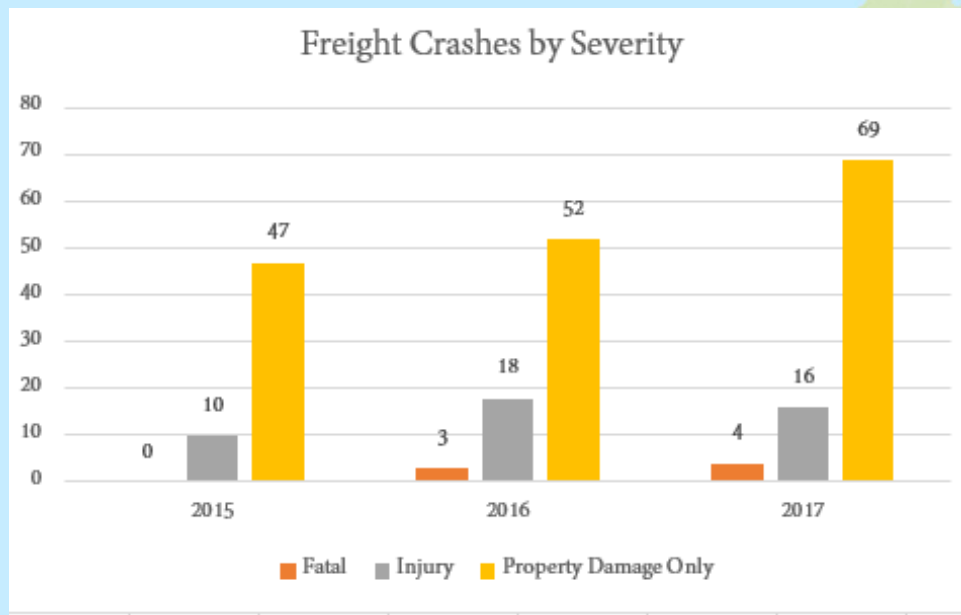




Freight Crashes by Severity on US-1

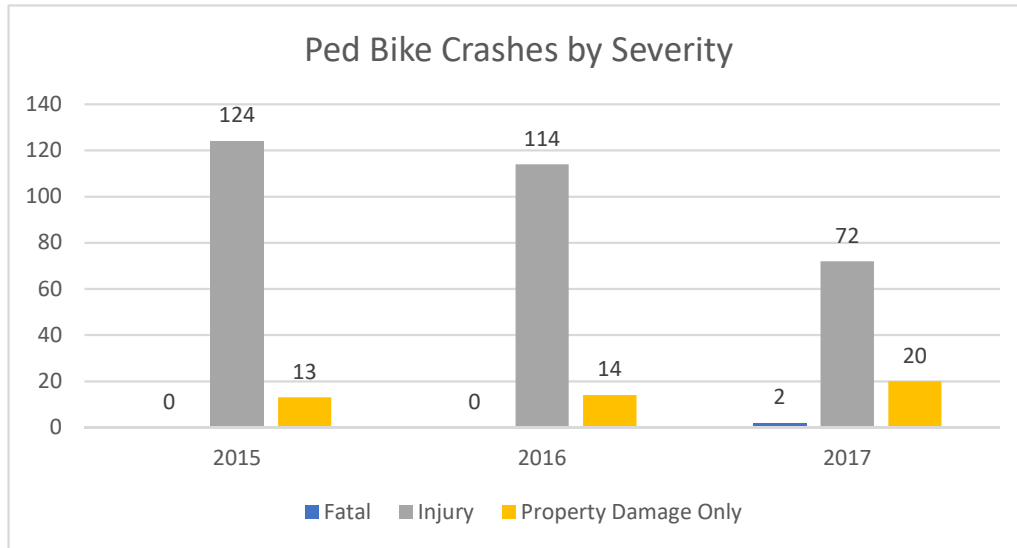
Weighting Factor for Hot Spots

Fatality = 10; Injury = 5; PDO = 1



Relatively Low Relatively Medium Relatively High

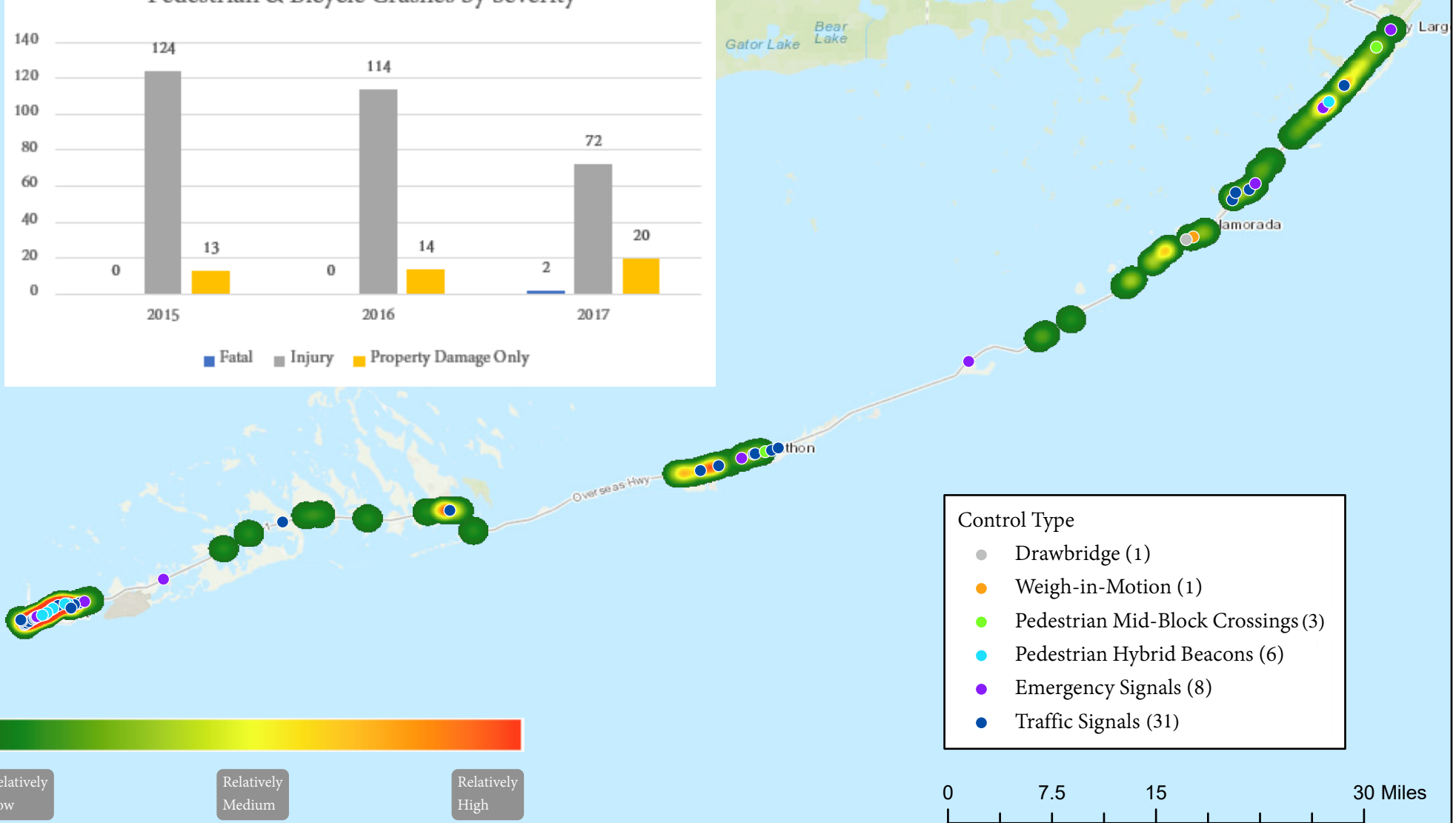
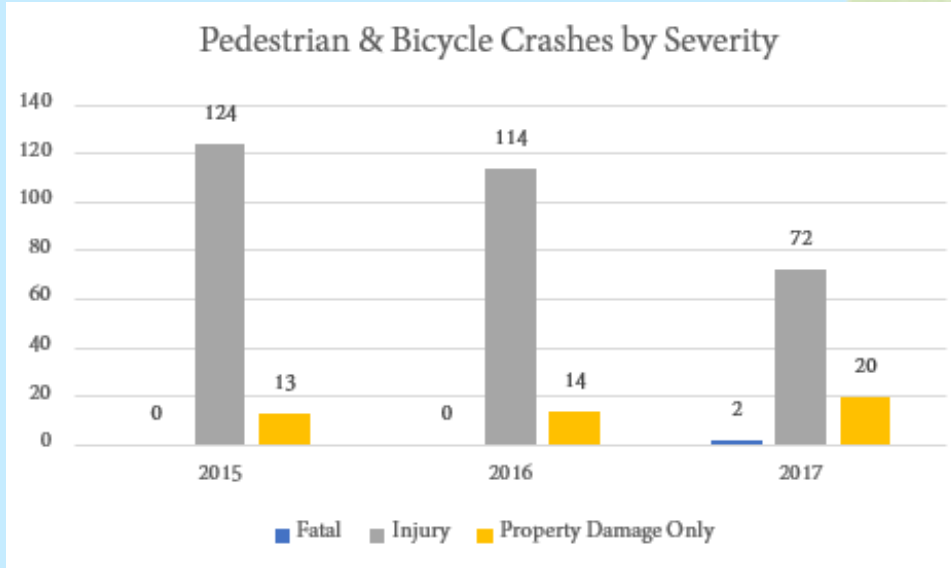
Ped/Bike Crashes by Severity				
Severity	2015	2016	2017	Total
Fatal	0	0	2	2
Injury	124	114	72	310
Property Damage Only	13	14	20	47
Total	137	128	94	359





Bicycle & Pedestrian Crashes by Frequency on US-1

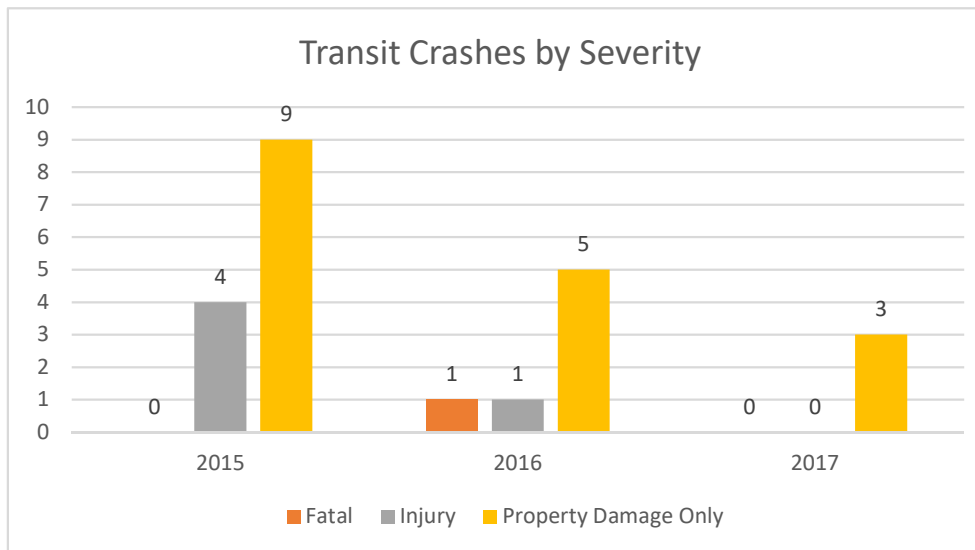
Weighting Factor for Hot Spots
Fatality = 10; Injury = 5; PDO = 1



- Control Type
- Drawbridge (1)
 - Weigh-in-Motion (1)
 - Pedestrian Mid-Block Crossings (3)
 - Pedestrian Hybrid Beacons (6)
 - Emergency Signals (8)
 - Traffic Signals (31)

Relatively Low Relatively Medium Relatively High

Transit Crashes by Severity				
Severity	2015	2016	2017	Total
Fatal	0	1	0	1
Injury	4	1	0	5
Property Damage Only	9	5	3	17
Total	13	7	3	23

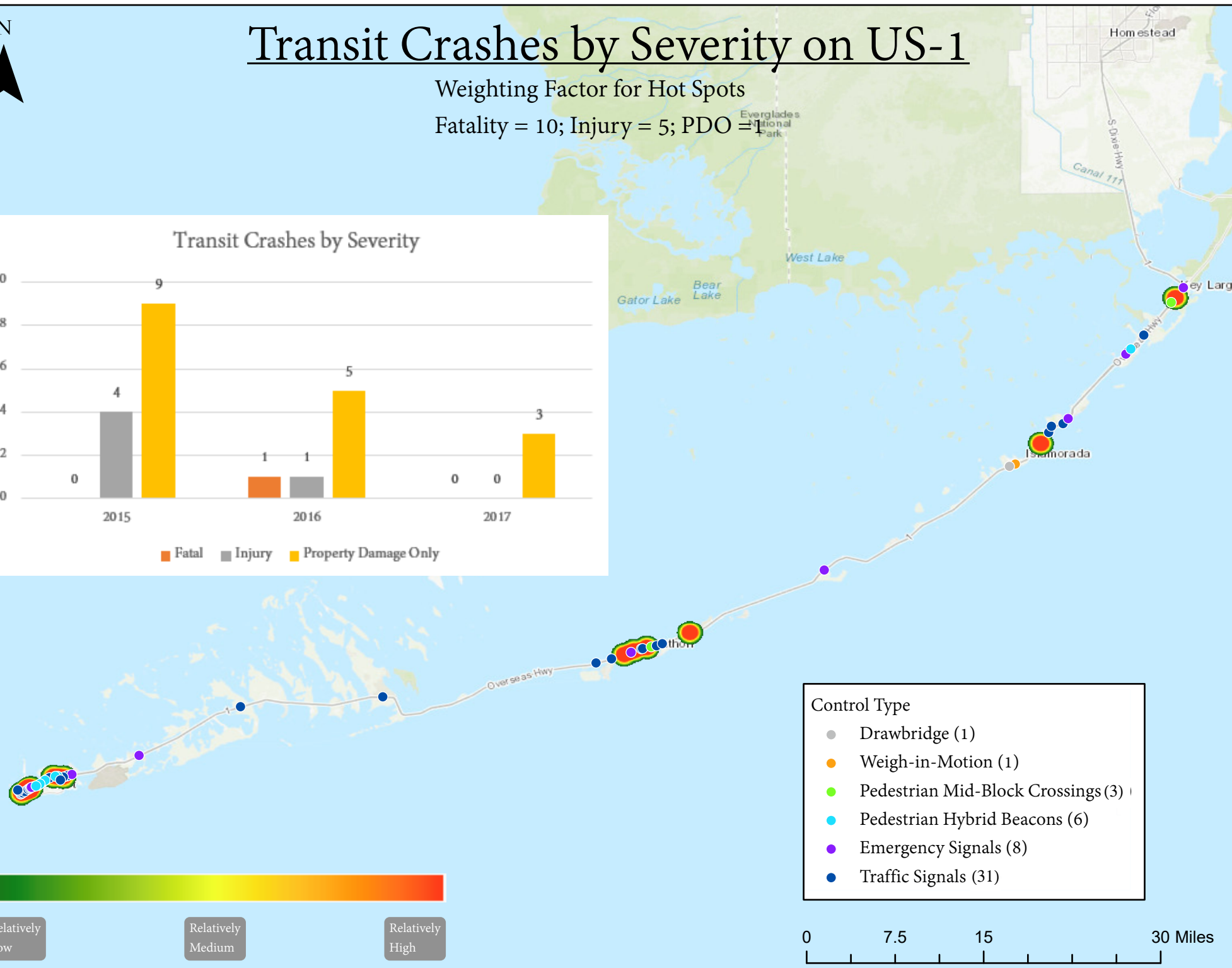
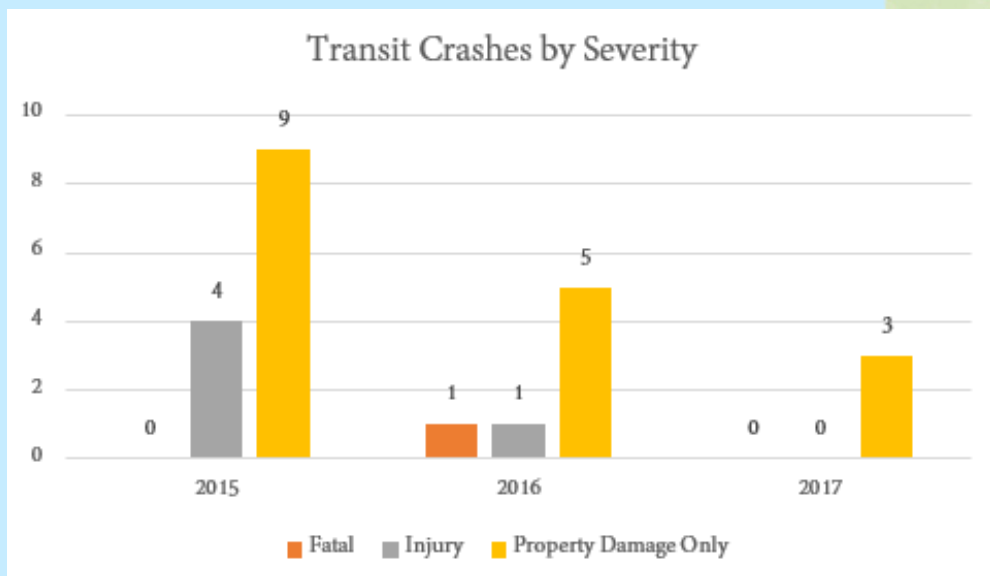




Transit Crashes by Severity on US-1

Weighting Factor for Hot Spots

Fatality = 10; Injury = 5; PDO = 1



- Control Type
- Drawbridge (1)
 - Weigh-in-Motion (1)
 - Pedestrian Mid-Block Crossings (3)
 - Pedestrian Hybrid Beacons (6)
 - Emergency Signals (8)
 - Traffic Signals (31)

